



Victoria Dock Primary School Home Learning Plan

Year 3



Week Commencing 14th December 2020

As your child is absent from school at the moment, please read the following information and links in order for your child to continue their education until they can return to school. These resources are aligned with the teaching taking place in school and wherever possible video links and additional instructions are given to help support your child. All completed work should be returned to school when your child returns. It will then be looked at by school staff following a quarantine period.

Year 3 Maths – Online Learning

Lesson 21 Subtract a 3-digit number from a 3-digit number - no exchange	https://resources.whiterosemaths.com/wp-content/uploads/2020/09/Y3-Autumn-Block-2-WO15-Subtract-3-digit-numbers-from-3-digit-numbers-no-exchange-2019.pdf
Lesson 22 Subtract a 3-digit number from a 3-digit number - exchange	https://resources.whiterosemaths.com/wp-content/uploads/2020/09/Y3-Autumn-Block-2-WO16-Subtract-a-3-digit-number-from-a-3-digit-number-exchange-2019.pdf
Lesson 23 Estimate answers to calculations	https://resources.whiterosemaths.com/wp-content/uploads/2020/09/Y3-Autumn-Block-2-WO17-Estimate-answers-to-calculations-2019.pdf
Lesson 24 Check answers	https://resources.whiterosemaths.com/wp-content/uploads/2020/09/Y3-Autumn-Block-2-WO18-Check-answers-2019.pdf

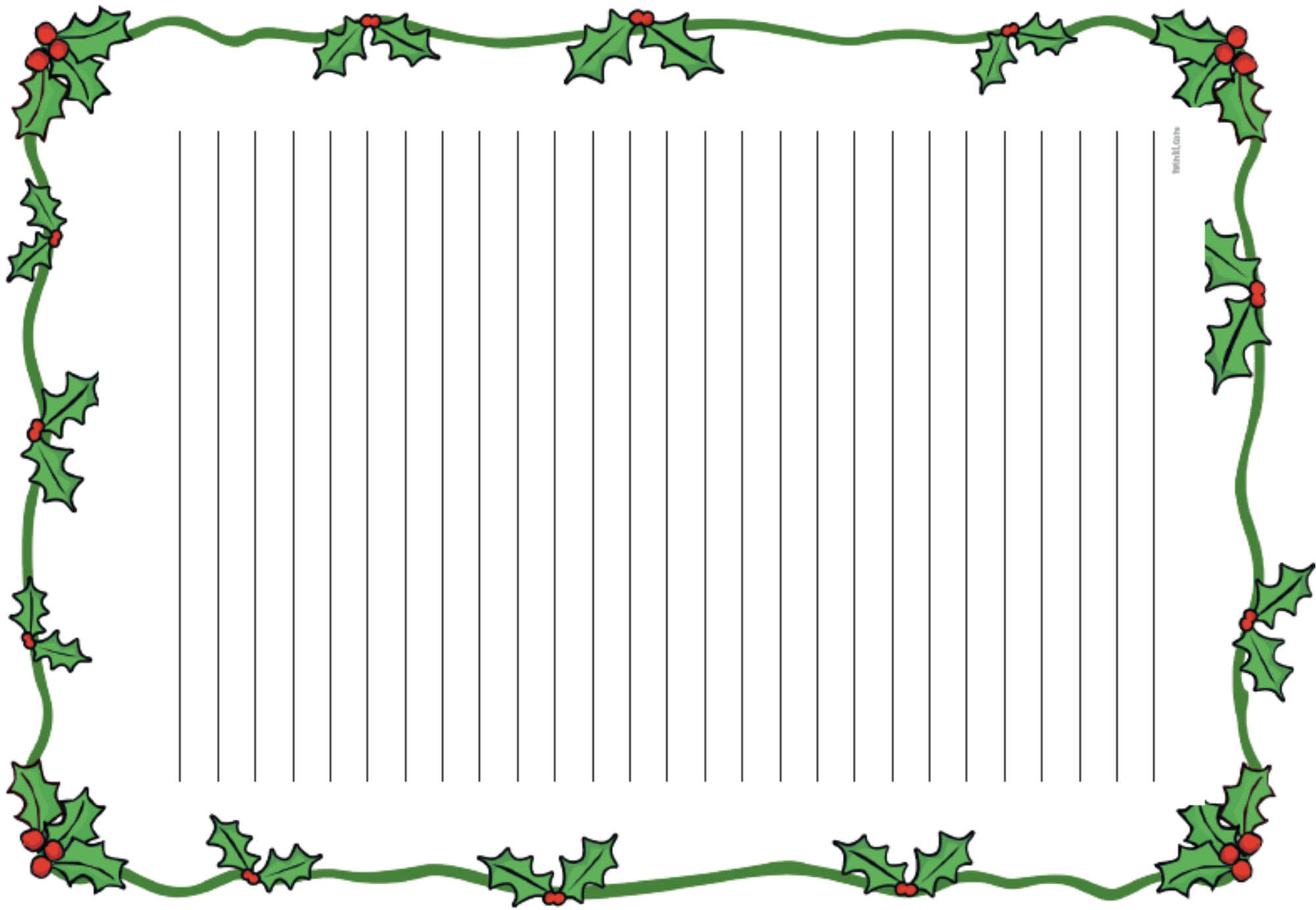
Writing

On Monday, we are editing and checking our non-chronological reports about volcanoes.
On Tuesday, we are going to be writing the Kevin the carrot story from the advert. See story map to help.

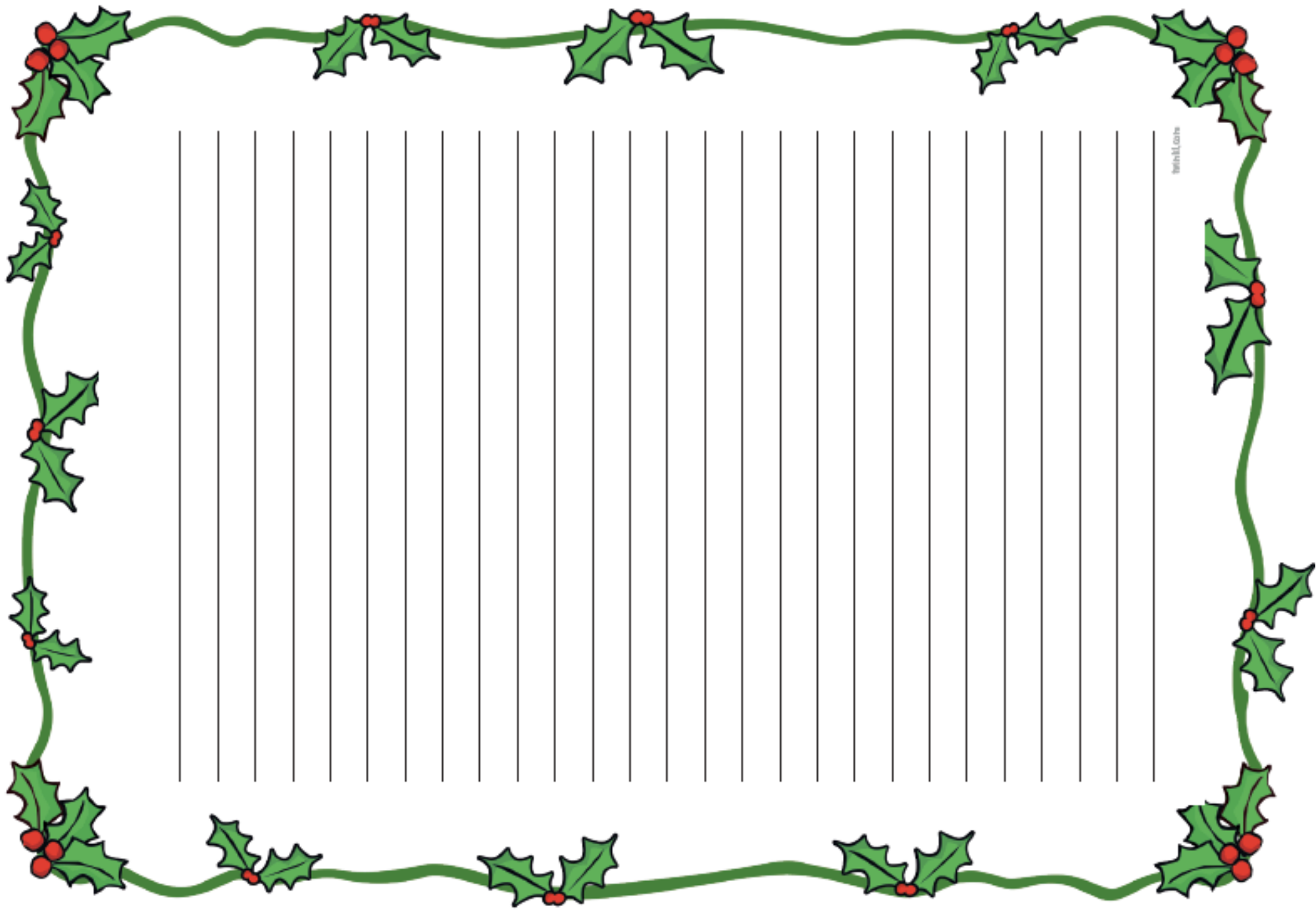
Wednesday is Christmas party day and Thursday is Christmas craft day.

Kevin the Carrot Story Map





twinkl.co.uk



twinkl.co.uk

Reading/Phonics

This week we are going to finish reading our class book 'The Firework Maker's Daughter' and write a book review.

If you do not have the book, I have attached a comprehension task about the Christmas John Lewis advert.



Explain why this man in the video is not as cheerful and happy as the other characters. Back up your point with evidence.

What does the girl do to help the boy get his ball back?

Number these events in the order that they happen in the video.

- A bag of shopping was left at a man's doorstep
- A man laughed at the joke he found in the cracker
- The snowman helped the 'snow couple' fix their car tyre
- The woman on the bus helped the girl fix her glasses
- The boy helped the snowman stuck in the ground



How did the pigeons in the video make the hedgehog feel part of the group?

What is the main message of this video? Why do you think this? Give evidence.

The man laughed incessantly at the joke.

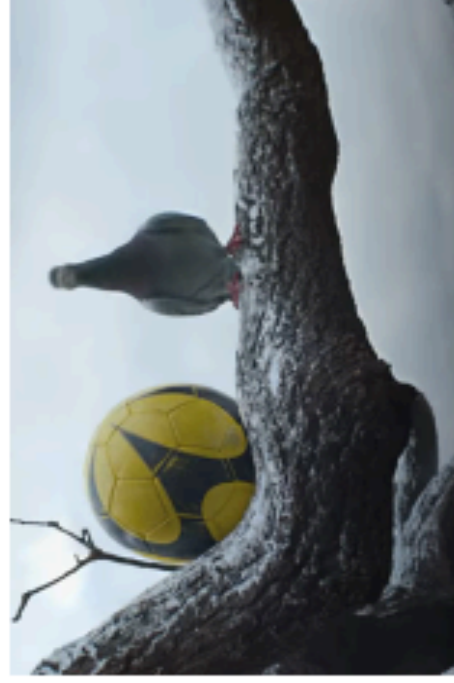
What does the word *incessantly* mean in this sentence?



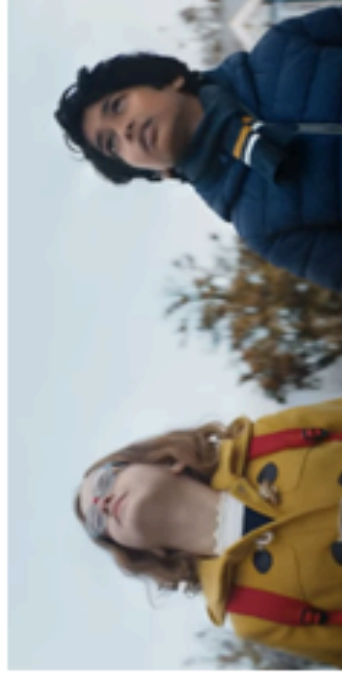
What season is the advert set in? Give 3 pieces of evidence to back up your answer.

*Full of **gratitude** towards the girl, he **smiled and waved** goodbye.*

What does the word *gratitude* mean in this sentence?



How was the viewer led to believe at this point that the pigeon will get the ball down for the boy? Give 2 ways using evidence to back up your answer.



The boy and girl know each other already.

Give evidence that supports this point.

The boy and girl are unknown to each other.

Give evidence that supports this point.

Other Subjects

PE/Dance- Keep yourself active indoors...

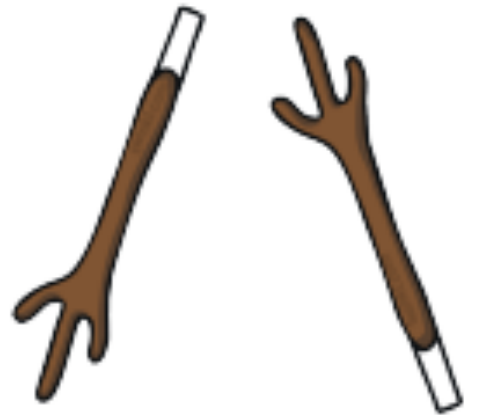
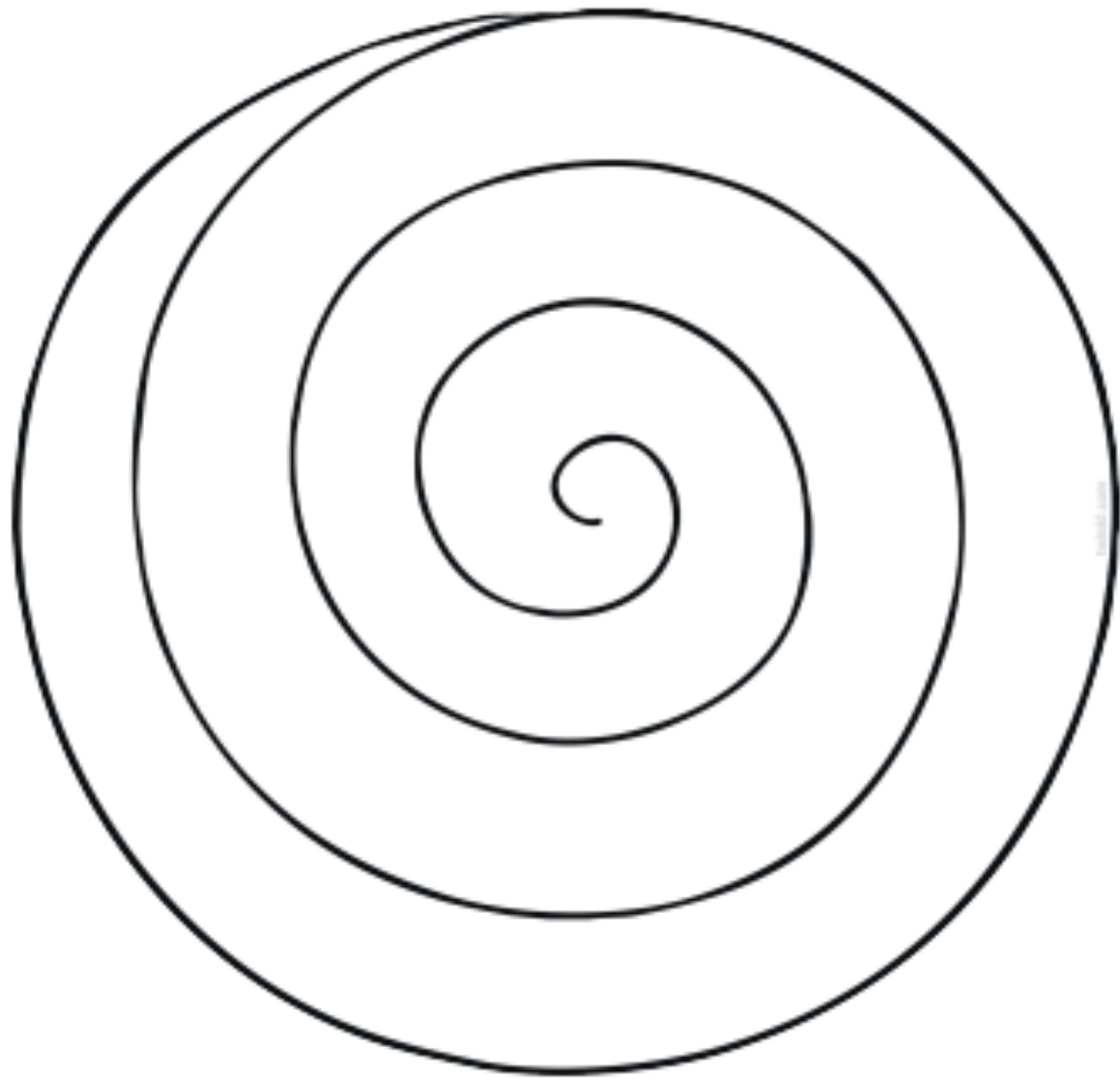
Cosmic Kids Yoga

Joe Wicks PE

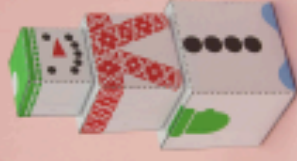
Go Noodle

Christmas performance – this week we will be continuing to practice sign language for our Christmas performance. Can you do some research on how to say, 'Merry Christmas' and other festive words. We are also going to decorate the class Christmas tree with the story book theme "the dinosaur that pooped Christmas". Why don't you create your own decoration at home?

Christmas crafts see below.



Instructions for 3D Christmas Box Snowman



Follow these simple instructions to make your own snowman model.

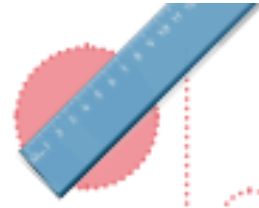
You will need:



a pair of scissors



glue



a ruler (optional)

Instructions:

1. First, cut out the three templates. They will become cubes that sit on top of each other, like in the picture.
2. Now, fold all of the dotted lines on each template. All of the dotted lines fold down (a hill fold). Use a ruler to help you keep a straight edge.

Follow this diagram:



How to Make the Cubes:

3. Take the largest template with the four buttons. This will become the snowman's body.
4. Add glue to tab 1 and stick it to the side next to it.
5. Glue tab 2 to the other side.
6. Next, add glue to tabs 3 and 4 and fold down this face of the cube. Hold the tabs until they have dried.
7. Add glue to tabs 5, 6 and 7 and then fold down the last face of the cube. Tuck tab 7 inside to finish the cube shape.
8. Now, repeat steps 4 to 7 with the other two cubes.

How to Assemble Your Snowman:

9. First, put the biggest cube at the bottom, then glue the cube with the scarf on top (see picture).
Glue the snowman's head on top of the middle cube.

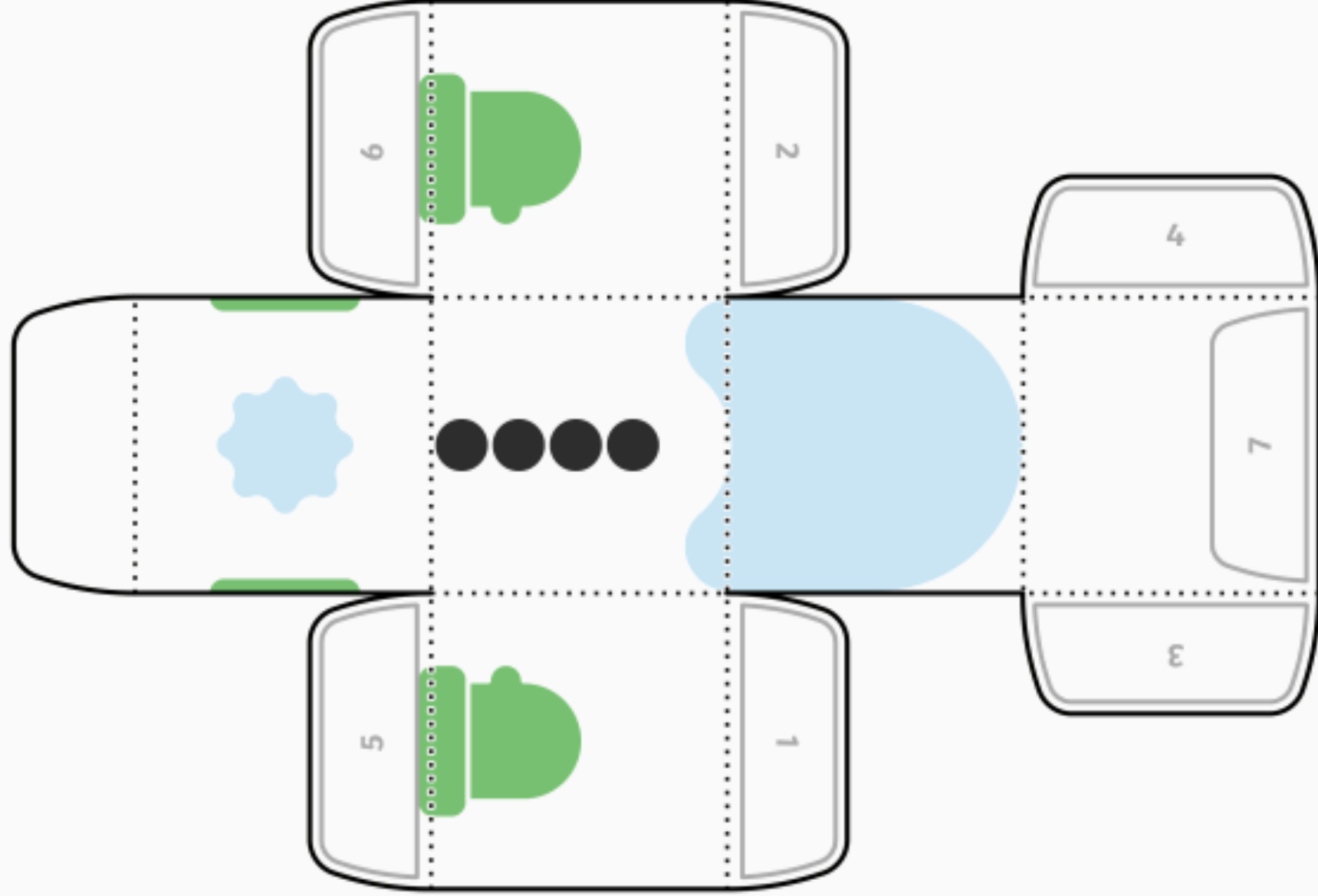
You have
finished your
snowman model!



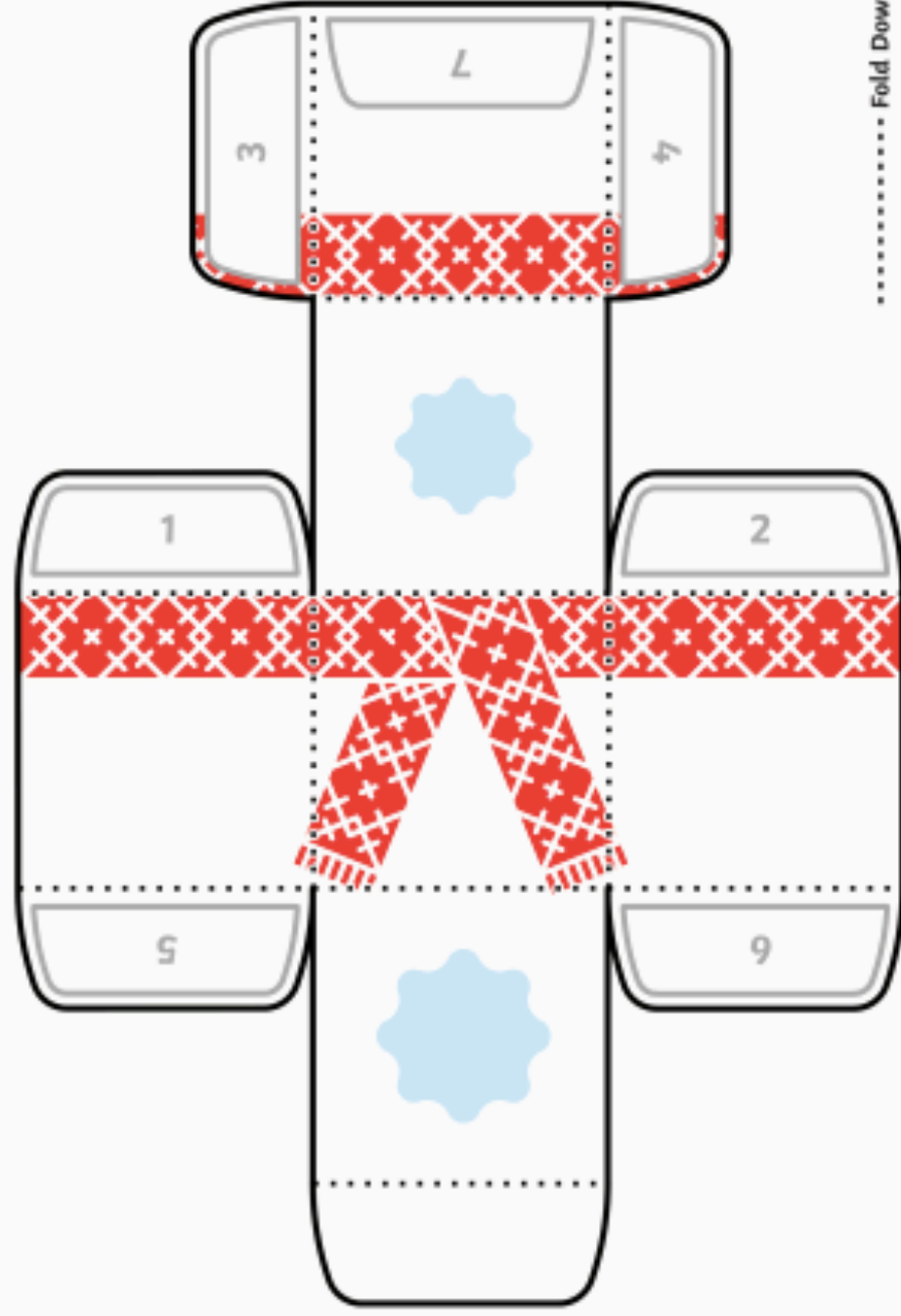
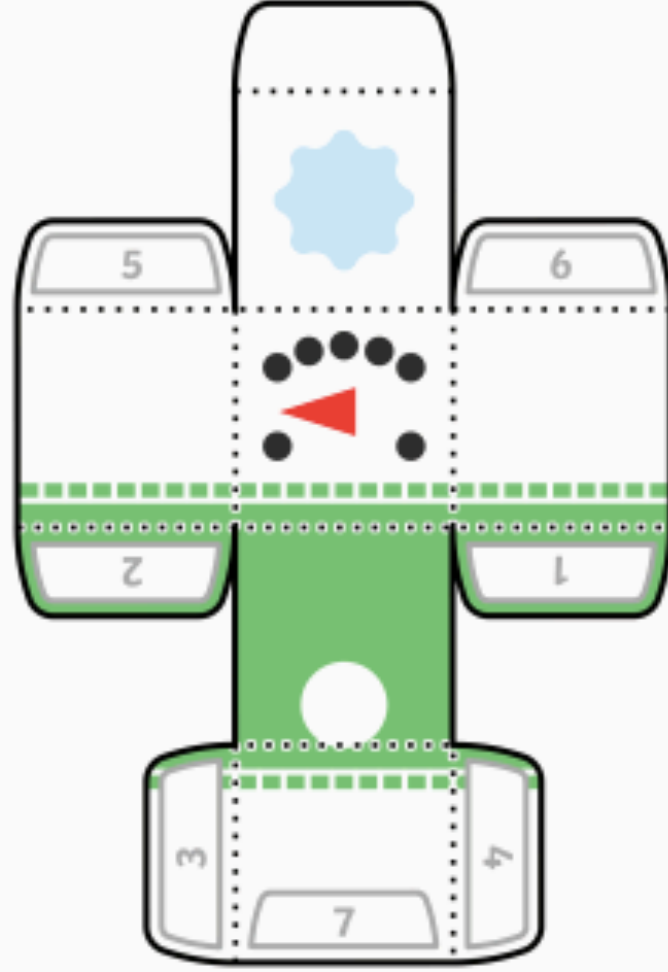
3D Christmas Box Snowman

..... Fold Down

- - - - - Fold Up

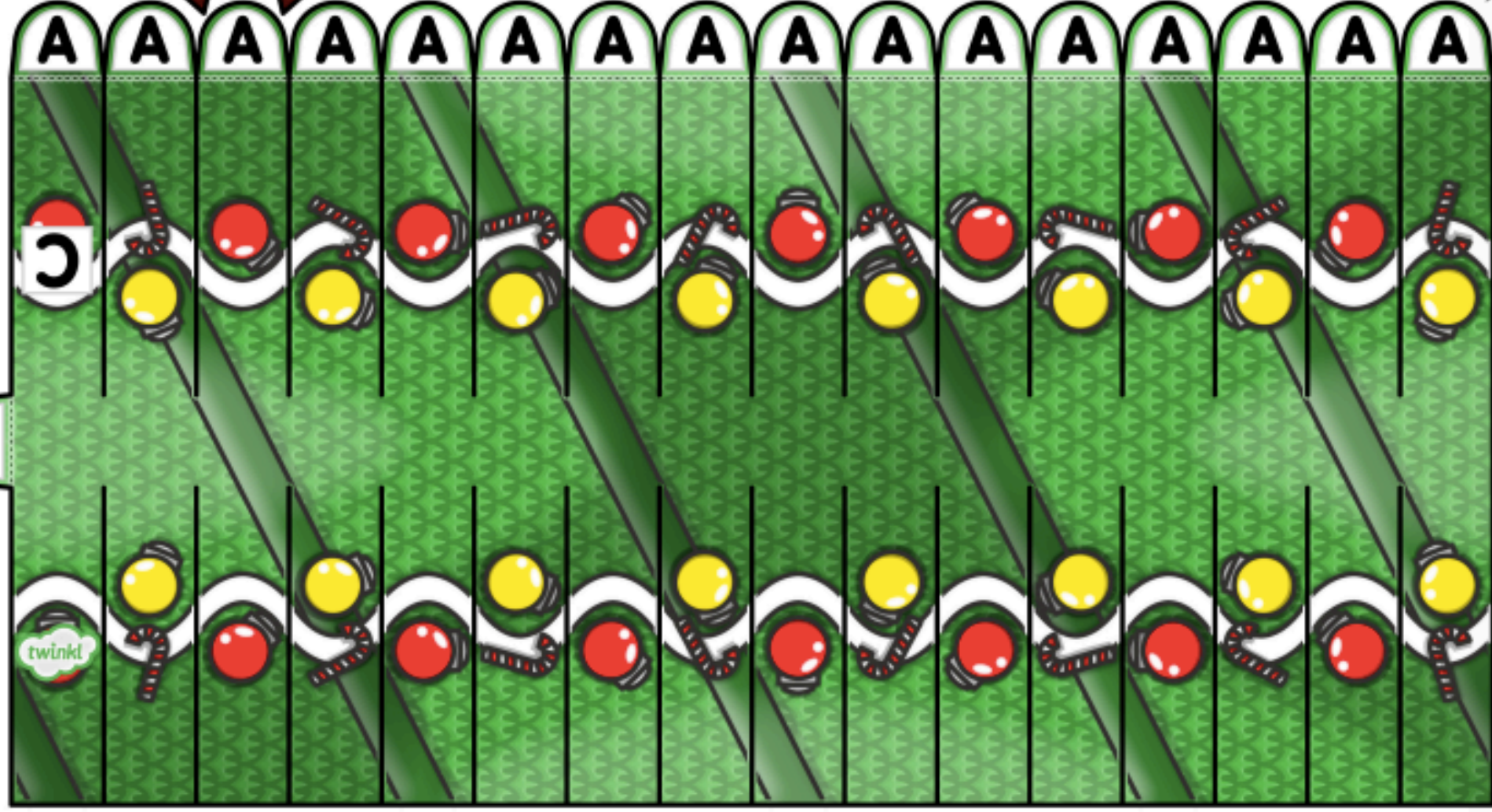


3D Christmas Box Snowman



..... Fold Down
- - - - - Fold Up

B



Carefully cut out the model along the solid black outlines.

Curve the model around and glue the tabs marked "A" to the opposite side to create a tube with cuts down the side.

Curve the tube around and glue the tab marked "B" to the opposite side. Finally glue the bow onto the tab marked "C".



- 1) Cut
- 2) Hill Fold
- 3) Valley Fold
- 4) Glue



Bauble Instructions



Step 1

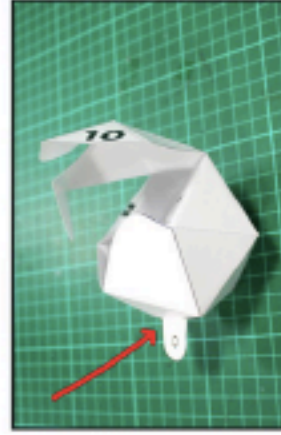
Carefully cut out the model along the solid black lines and fold along the dotted lines as shown.



Step 2

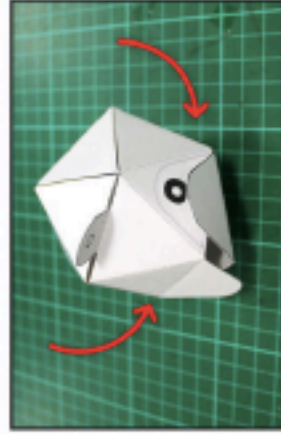
Fold around tab 1 and glue to the triangle attached to tab 4 to create a loop. Glue tab 2 to the triangle attached to tab 5 to create a pentagonal-shaped lid.

Make sure you cut all the way along the tabs as shown.



Step 3

Fold down tabs 3, 4 and 5 and glue down the lid created in step 2. Now glue the back of the hanging section together as the arrow shows.



Step 4

Fold down tab 6 and glue on the inside of the triangle to create another lid.



Step 5

Fold down the lid and glue it down over tabs 7, 8 and 9, making sure the extra tab is on the outside.

Step 6

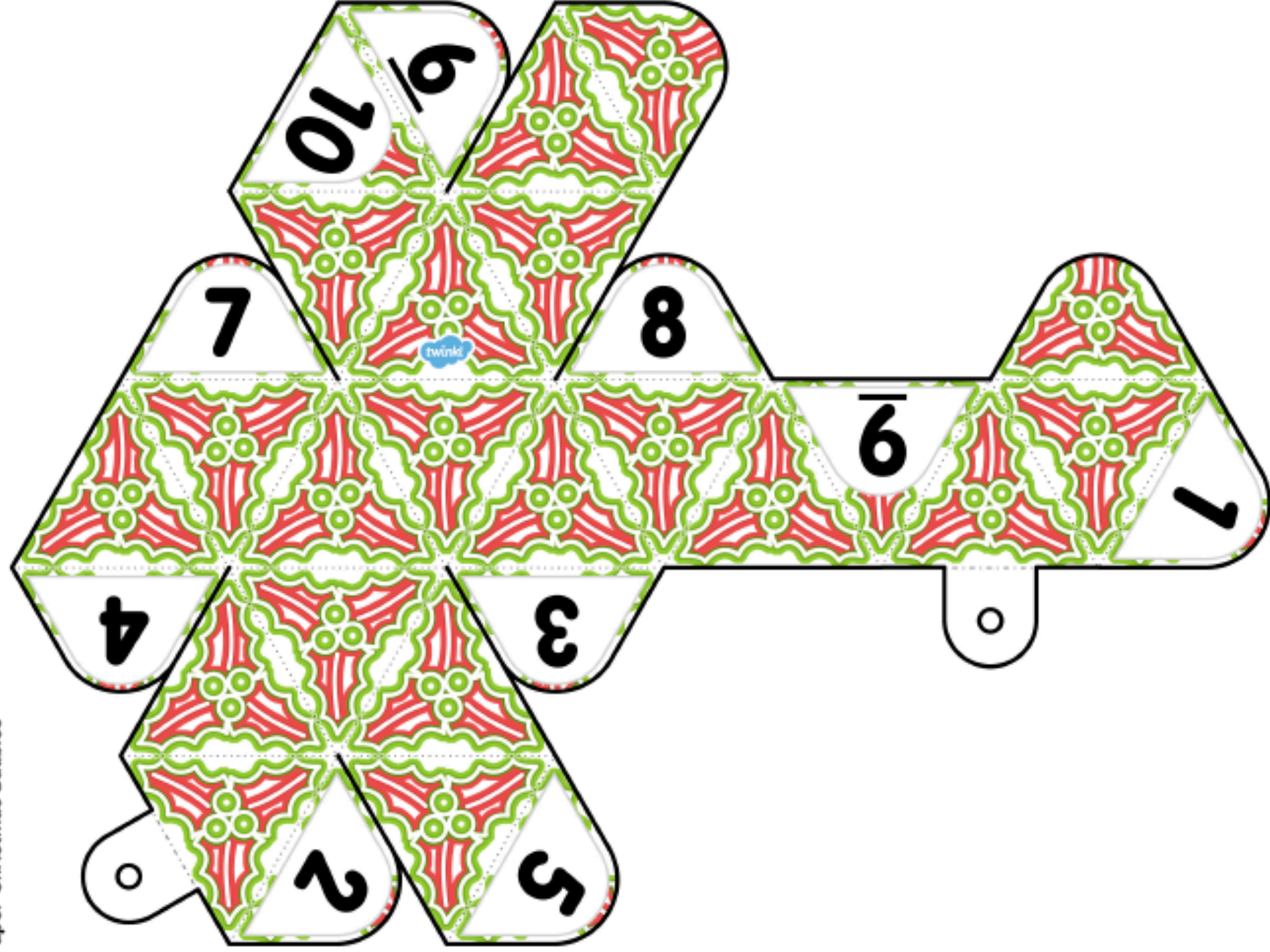
Glue down the extra tab to cover tab 10



Step 7

To complete your bauble, use a hole punch to create a hole where the circle is and thread a piece of string or ribbon.

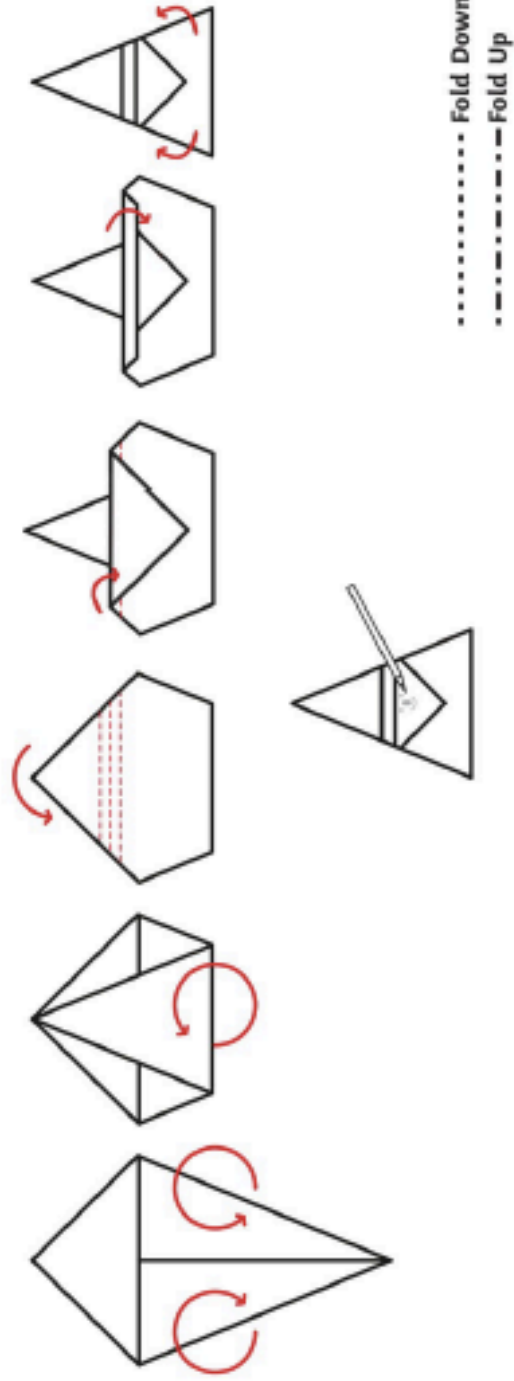
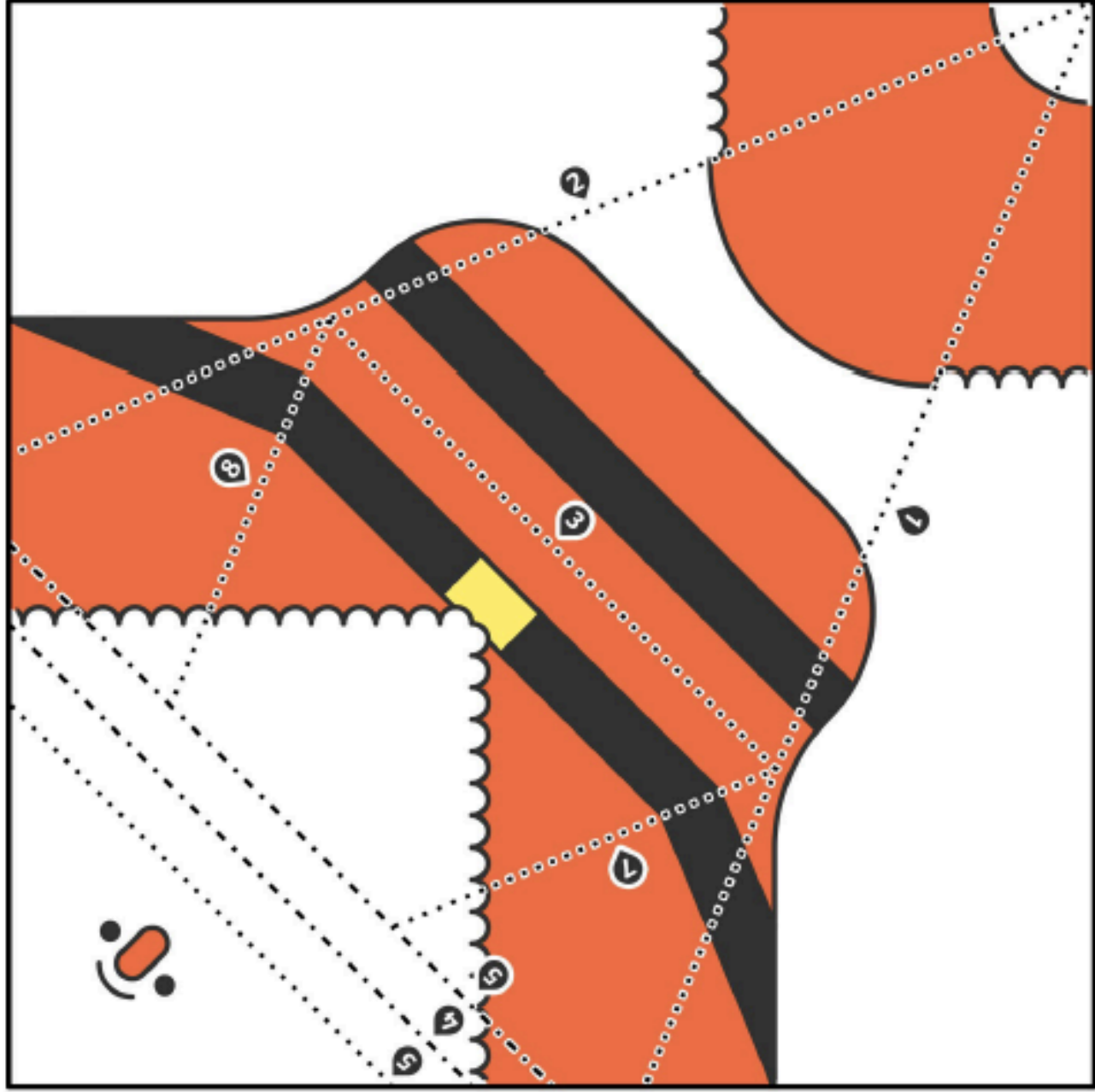
- 1) Cut
- 2) Hill Fold
- 3) Valley Fold
- 4) Glue



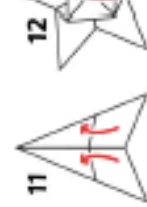
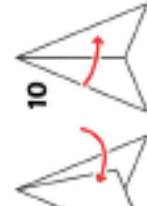
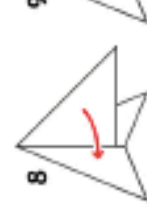
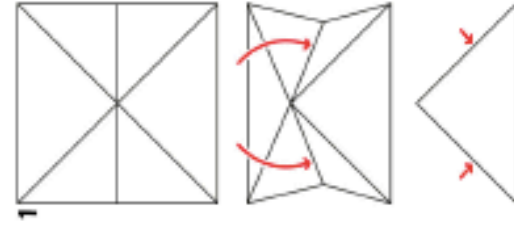
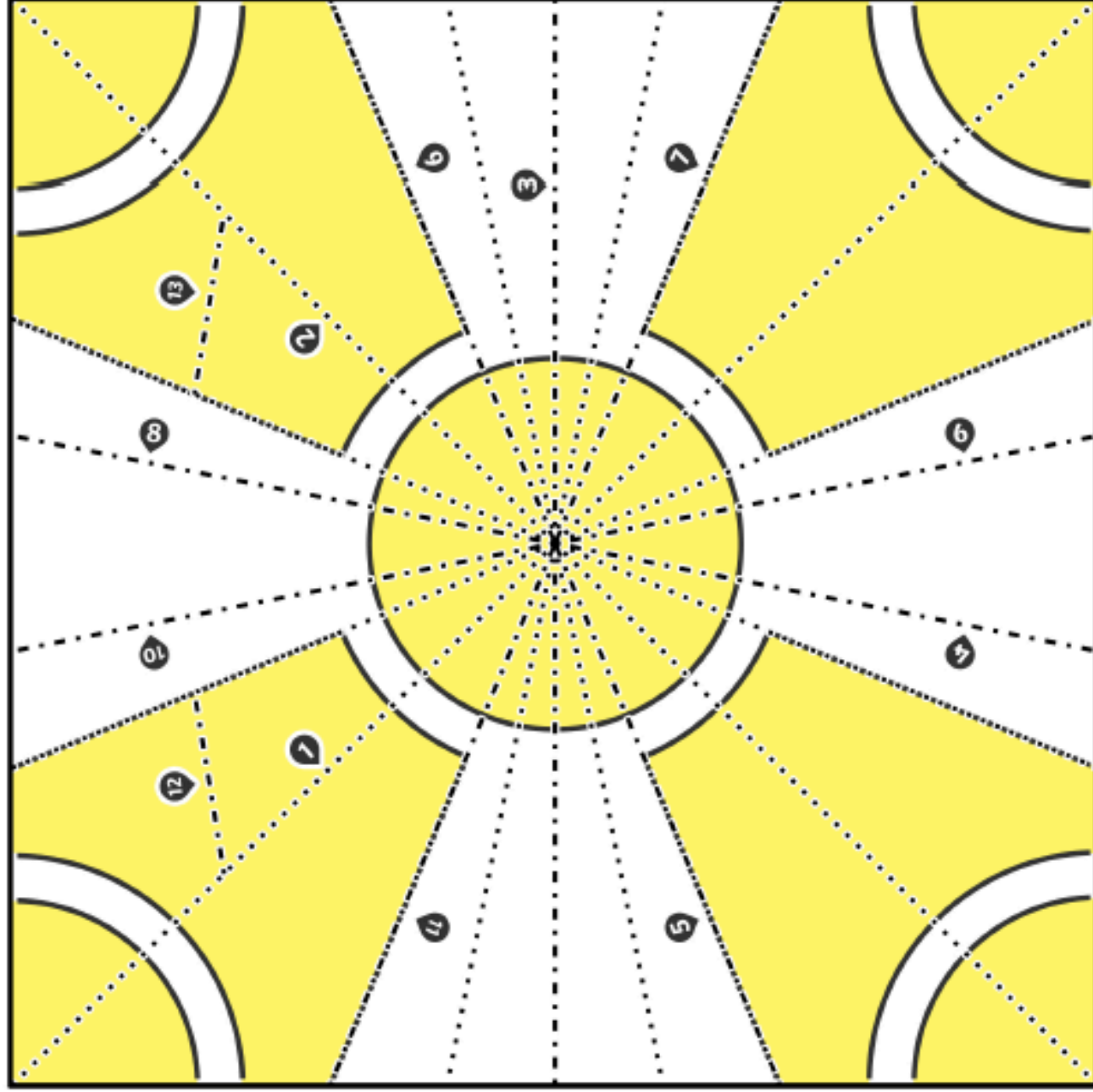
- 1) Cut
- 2) Valley Fold
- 3) Hill Fold
- 4) Glue



Origami Father Christmas

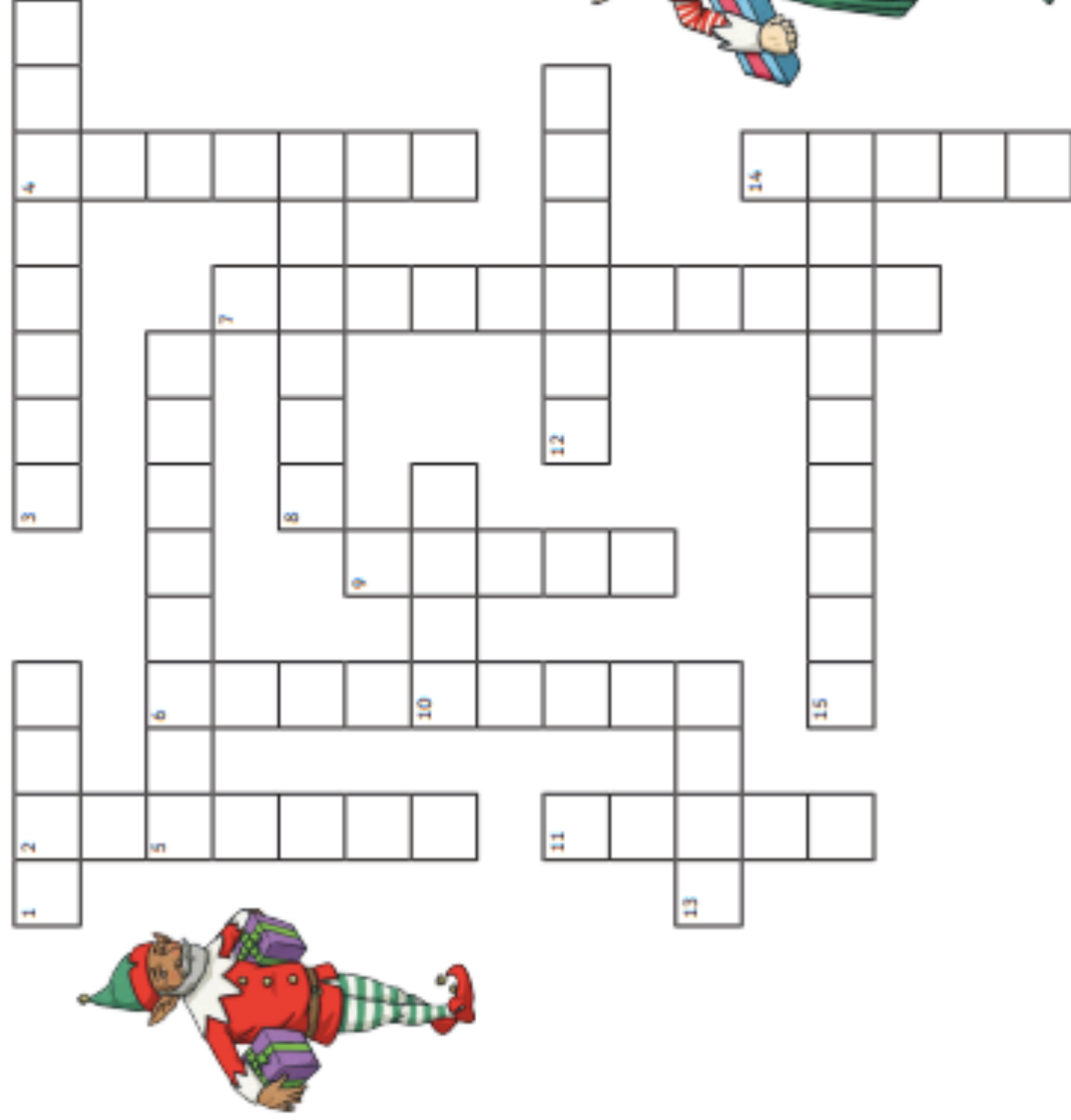


Origami 5 Pointed Star



..... Fold Down
----- Fold Up

Christmas Elf Crossword



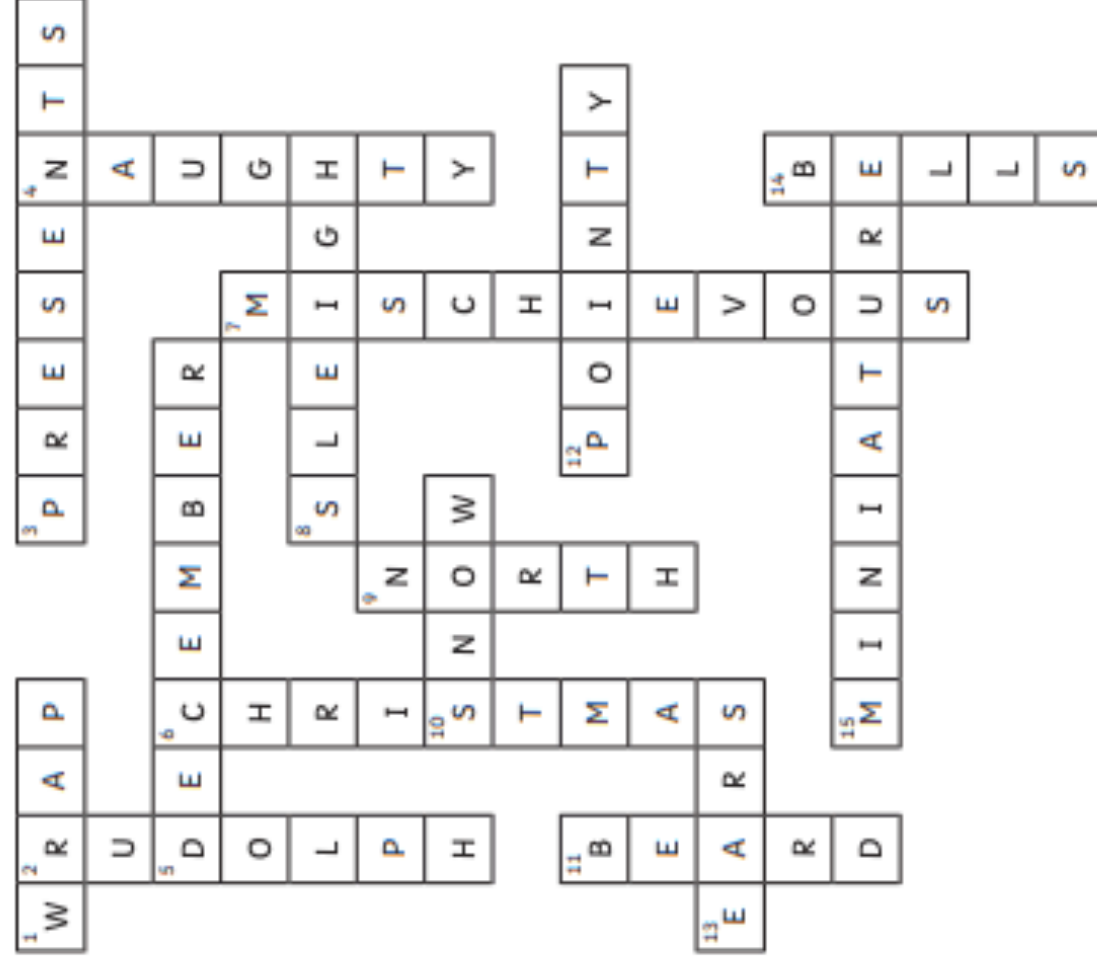
Across

1. Elves love listening to ----- music!
3. The elves wrap these in Santa's workshop.
5. The elves' busiest month of the year.
8. The elves help to pack which of Santa's vehicles.
10. An elf's favourite type of weather.
12. An adjective to describe an elf's hat.
13. Elves are good listeners because of the size of their big -----.
15. An adjective to describe an elf's size.

Down

2. The elves' favourite reindeer.
4. The elves have a ----- or nice list.
6. The elves' favourite religious festival.
7. An adjective to describe an elf's personality.
9. Santa's elves live in the ----- Pole.
11. Many male elves have which hairy facial feature?
14. Elves have these on the end of their toes.

Christmas Elf Crossword Answers



Across

1. Elves love listening to _____ music! **wrap**
3. The elves wrap these in Santa's workshop. **presents**
5. The elves' busiest month of the year. **December**
8. The elves help to pack which of Santa's vehicles. **sleigh**
10. An elf's favourite type of weather. **snow**
12. An adjective to describe an elf's hat. **pointy**
13. Elves are good listeners because of the size of their big _____. **ears**
15. An adjective to describe an elf's size. **miniature**

Down

2. The elves' favourite reindeer. **Rudolph**
4. The elves have a _____ or nice list. **naughty**
6. The elves' favourite religious festival. **Christmas**
7. An adjective to describe an elf's personality. **mischievous**
9. Santa's elves live in the _____ Pole. **North**
11. Many male elves have which hairy facial feature? **beard**
14. Elves have these on the end of their toes. **bells**



Christmas

a f q m m y r r h z t e
h r s a n t a k i n g s
c a l r d j o s e e l a e
f n b y o w l e e l a e
d k e t n a z a r e t h
m i t o c h u r c h r f
a n h c h r i s t m a s
n c l r g d o n k e y g
g e e p i c r h s f s o
e n h k f i h n p r t l
r s e j t u w u c o a d
x e m n s h e p h e r d

Christmas	Bethlehem	myrrh	manger
Santa	Shepherd	gold	donkey
Mary	Kings	church	star
Joseph	frankincense	Nazareth	gifts

